

1st FIRST RESPONSE[®]

HCV Card Test

For the detection of antibodies to Hepatitis C virus in human serum / plasma / whole blood



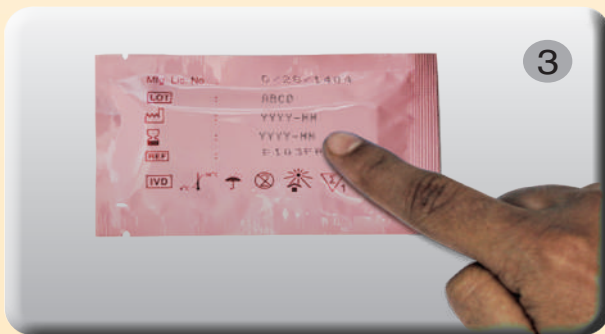
FIRST RESPONSE HCV CARD TEST



Prepare all items shown above for testing. (Timer and gloves are not provided in the test kit; they must be available)



Confirm product name and check the sealing of test device pouch.



Check expiry date on the test pouch. (If expired, do not use)



Put on gloves. (Use new gloves for each client)



Label the test device with the patient identification number.



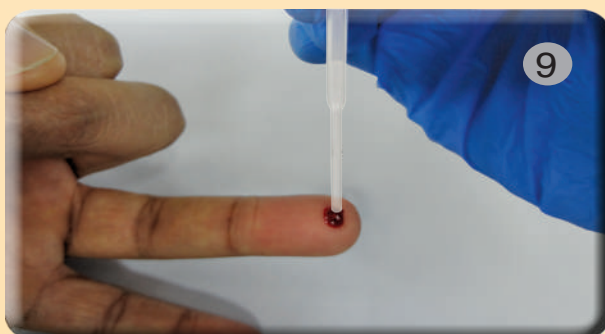
Wipe the patient's finger with the alcohol swab. (Alcohol must be dry before pricking)



Remove clear protective cap of the lancet



Push lancet gently against test site. Wipe the first drop of blood and discard the lancet into sharp bin.



Gently squeeze the bulb of a specimen transfer device and touch the tip to a drop of blood. Release the bulb to draw up the blood to the specimen transfer device.



Add one drop of blood into the specimen well.



Add one drop of assay buffer into the specimen well.



Read test results at 15 Minutes.
Don't interpret after 20 Minutes.

Note: Dispose the paper waste in normal paper waste container



Record the test results. Dispose of used test device and all accessories and kit components coming in contact with human specimens into biohazardous waste container.

INTERPRETATION

