

SURE STATUS[®]

**HIV-1 RAPID REGENCY CARD TEST
(Whole Blood / Serum / Plasma)**

FEATURES

- ▶ Relatively low specimen requirement: 5 µl.
- ▶ Direct specimen addition, no sample dilution requirement.
- ▶ Lateral flow test housed in cassette, easy to handle.
- ▶ Engineered for Whole blood, Serum, Plasma.
- ▶ 100 % sensitivity and 100 % specificity.
- ▶ Accurate detection of RECENT and LONG TERM Infections.
- ▶ Visual and Mobile App based result interpretation.
- ▶ Storage temperature 4°C -30 °C.
- ▶ Long shelf life up to 24 months.

BENEFITS

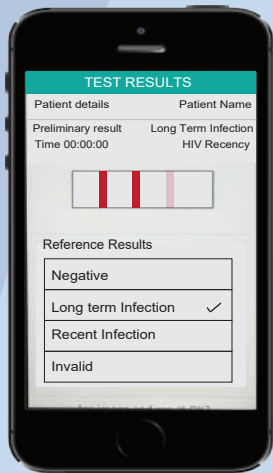
- ▶ Unmistakable results at 20 minutes.
- ▶ Simple and easy to use, does not require any advanced training.
- ▶ Cost effective, can be used effectively in resource-limited conditions.
- ▶ Easy patient record access through data generated by Mobile App based reader.
- ▶ Mobile App reader provides, insights into the region based occurrence of RECENT and LONG TERM infections.
- ▶ Stable at 4°C - 30°C making it convenient in use for the field, do not require cold chain.

KIT CONTENTS

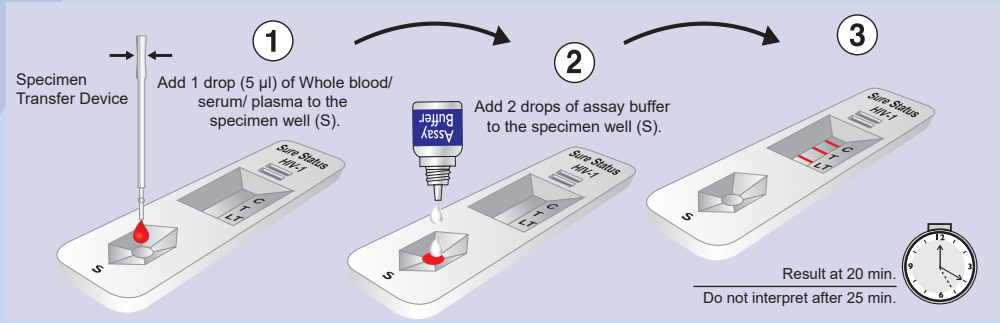
- Test device with desiccant
- Assay buffer bottle
- Specimen transfer device
- Sterile lancet
- Alcohol swab
- Instructions for use

ORDERING INFORMATION

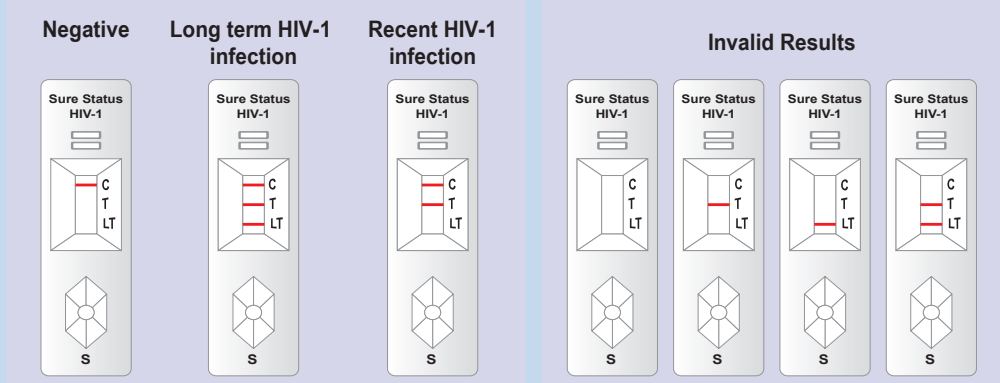
Info@premiermedcorp.com	
Type : Bulk packing	
Catalogue No.	Pack Size
SS01P25	25 Tests / Kit



TEST PROCEDURE



RESULTS INTERPRETATION



IN-HOUSE EVALUATION

REFERENCE EIA ASSAY

Visual Interpretation		Recent	Long Term	Total
	Recent		138	5
Long Term		0	40	40
Total		138	45	183

%agreement observed 97.27% Kappa: 0.923 (0.857 to 0.989)



ISO 13485 & EN ISO 13485
Certified Company

Part No. : SS01-BRO-001, Rev. AC, Date: 2021-09-06



Manufactured by
Premier Medical Corporation Private Limited
Mfg. Unit : A1-302, GIDC, Sarigam 396155. Dist. Valsad, Gujarat, INDIA
• Customer support email : info@premiermedcorp.com • Tel.: +91 260 2780112/113,
• www.premiermedcorp.com