



Dengue (NS1) Card Test (Whole blood / Serum / Plasma)

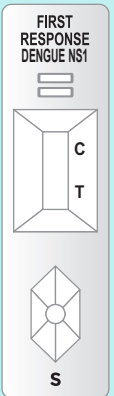
One-step Dengue (NS1) Card Test for Whole blood / Serum / Plasma

▶ FEATURES

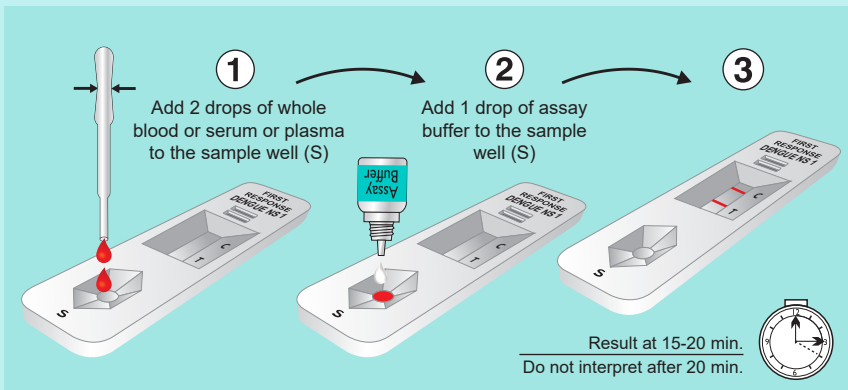
- ▶ Clear background self contained test procedure
- ▶ Specifically engineered for whole blood samples, as well as serum and plasma
- ▶ 100% sensitivity and 100% specificity
- ▶ Storage temperature 4°C -30°C
- ▶ Long shelf life 24 months

▶ BENEFITS

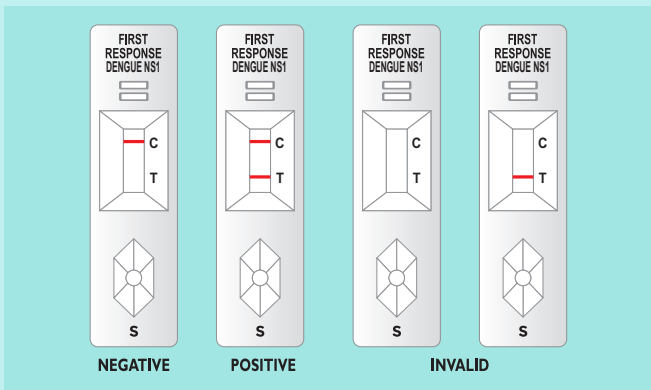
- ▶ Unmistakable results in 15-20 minutes
- ▶ Simple and easy to use, does not require advanced medical training
- ▶ Cost effective, can be used effectively in resource limited conditions
- ▶ Accurate and reliable
- ▶ Easy patient record keeping. Does not require cold chain & convenient for small volume users



TEST PROCEDURE



RESULTS INTERPRETATION



KIT CONTENTS

- Test device with desiccant
- Assay buffer bottle
- Specimen transfer device
- Sterile lancet
- Alcohol swab
- Instructions for use

Sensitivity	Specificity
100%	100%

ORDERING INFORMATION

Type : Bulk Packing	
Catalogue No.	Pack Size
PI22FRC25	25 Tests / Kit
PI22FRC30	30 Tests / Kit
PI22FRC50	50 Tests / Kit
PI22FRC60	60 Tests / Kit
PI22FRC100	100 Tests / Kit



ISO 13485 & EN ISO 13485
Certified Company

Part No. : PI22-BRO-001, Rev. AB, Date: 2020-07-11



Manufactured by
Premier Medical Corporation Private Limited
A1-302, GIDC, Sarigam 396155. Dist. Valsad, Gujarat, INDIA
• Customer support email : info@premiermedcorp.com • Tel.: +91 260 2780112/113,
• www.premiermedcorp.com