

1 FIRST RESPONSE®

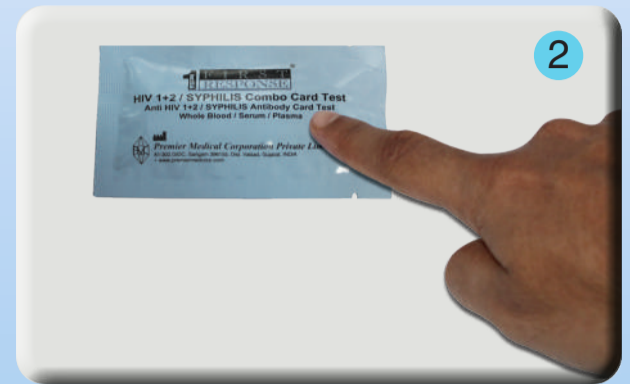
HIV 1+2/SYPHILIS COMBO CARD TEST (Whole Blood/Serum/Plasma)



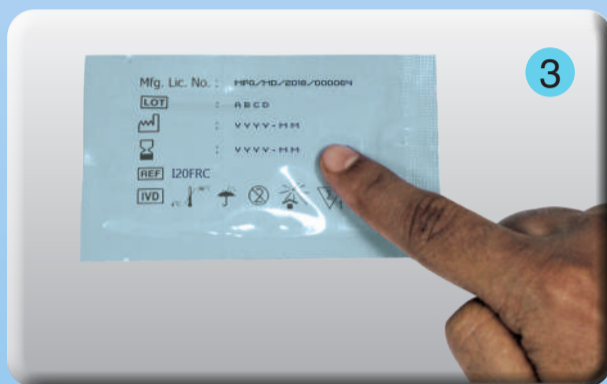
FIRST RESPONSE HIV 1+2/SYPHILIS Combo Card Test Kit



1 Prepare all items shown above for testing. (Timer and gloves are not provided in the test kit).



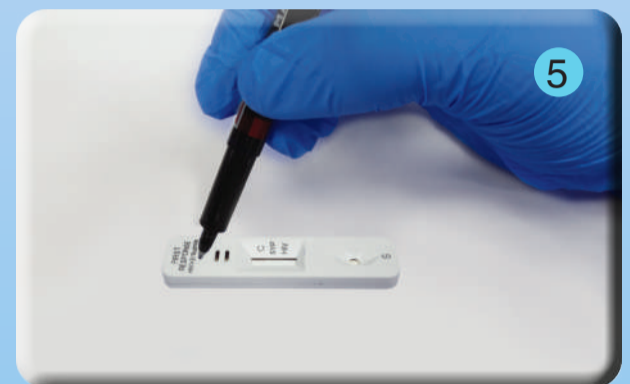
2 Confirm product name and check the sealing of test device pouch.



3 Check expiry date on the test packet. (If expired, do not use)



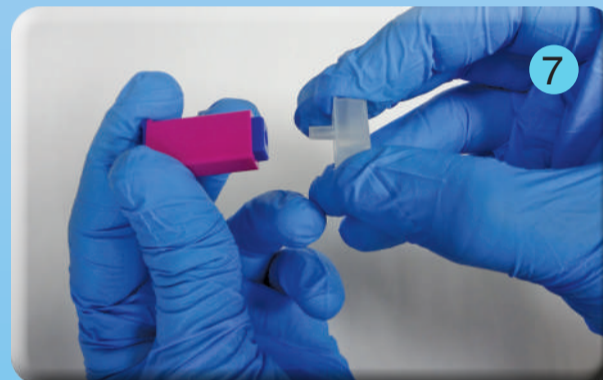
4 Wear gloves. (Use new gloves for each patient)



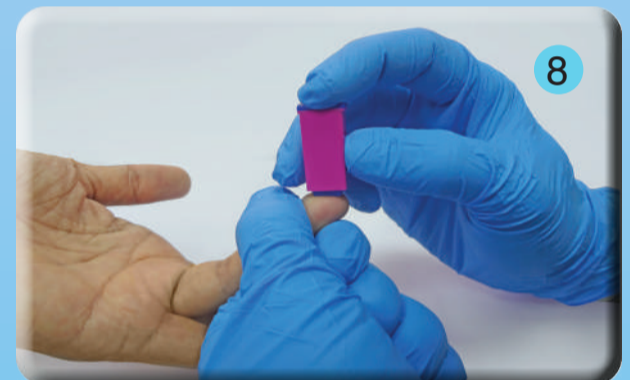
5 Label the test device with the patient identification number.



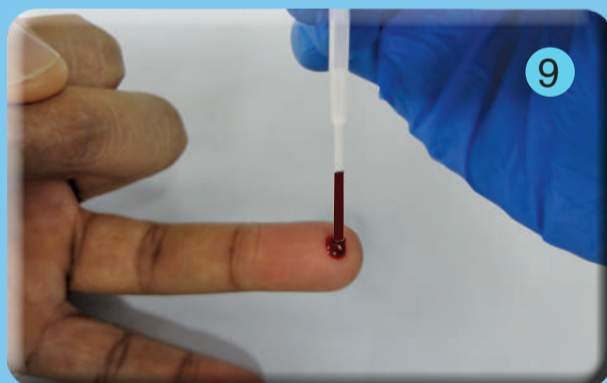
6 Wipe the complete fingertip with the alcohol swab provided and wait until the fingertip is completely dried.



7 Remove clear protective cap of the auto safety lancet. Do not use the auto safety lancet if the auto safety lancet found uncapped.



8 Squeeze the fingertip then push gently at the lateral side of the fingertip as shown in above figure. Wipe the first drop of the blood using sterile gauze. Without pressing too hard, gently squeeze fingertip once again to obtain second drop of blood (~40-50 µl).



9 Take the specimen transfer device provided and hold it vertically. Gently squeeze the bulb of specimen transfer device and immerse open end in the center of a blood drop and release the bulb slowly to draw up the blood up to 20 µl marking line on the specimen transfer device.



10 Hold the specimen transfer device vertically as shown in above figure and gently squeeze the bulb of specimen transfer device to dispense 20 µl of whole blood/serum/ plasma (Filled up to the marking) to the specimen well (s) by gently touching the tips of the specimen transfer device to the sample pad.

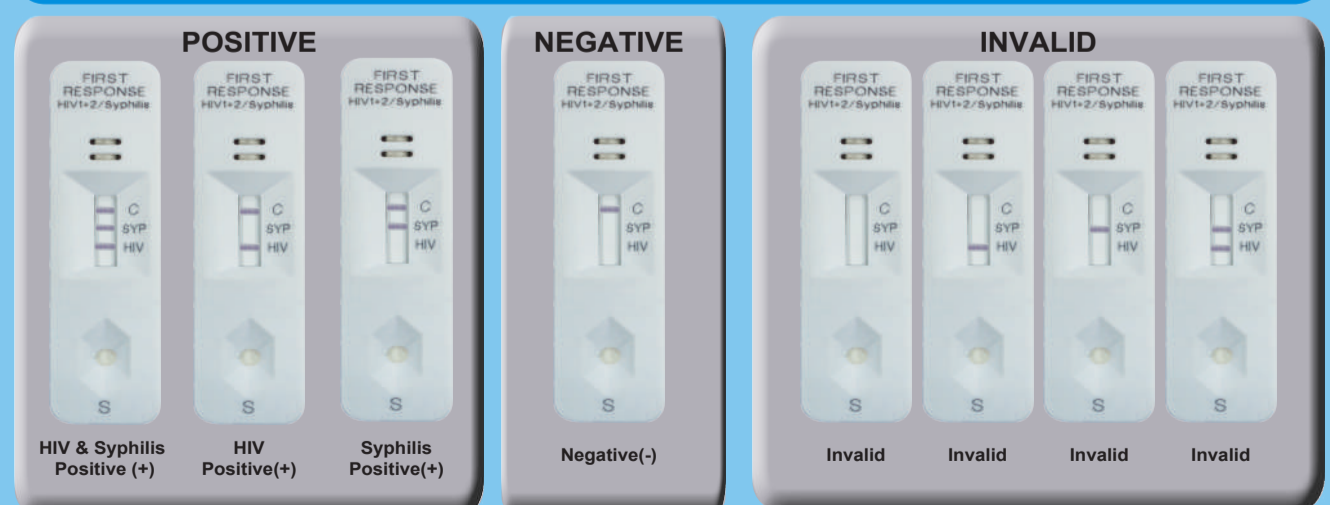


11 Hold the assay buffer bottle vertically and add two drops of assay buffer to the specimen well. Interpret test results at 15 minutes after adding assay buffer to the specimen well.



12 Read test results at 15 Minutes. Don't interpret after 25 Minutes.

INTERPRETATION



• The Invalid test results should be retested with new test device.