

# 1 FIRST RESPONSE®

## HIV 1-2.0 CARD TEST (Version 2.0) (Whole Blood/Serum/Plasma)



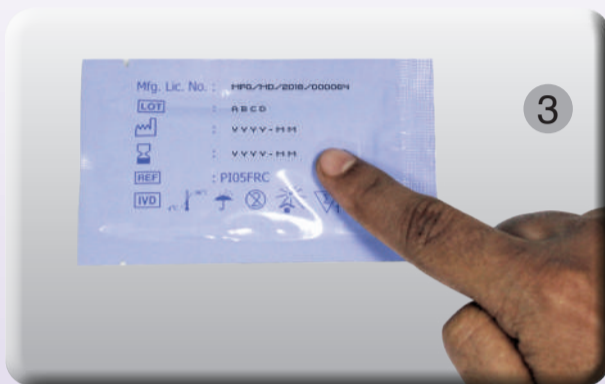
FIRST RESPONSE® HIV 1-2.0 CARD TEST (Version 2.0) KIT



Prepare all items shown above for testing. (Timer and gloves are not provided in the test kit; they must be available).



Confirm product name and check the packet is still sealed.



Check expiry date on the test pouch.  
(If expired, do not use)



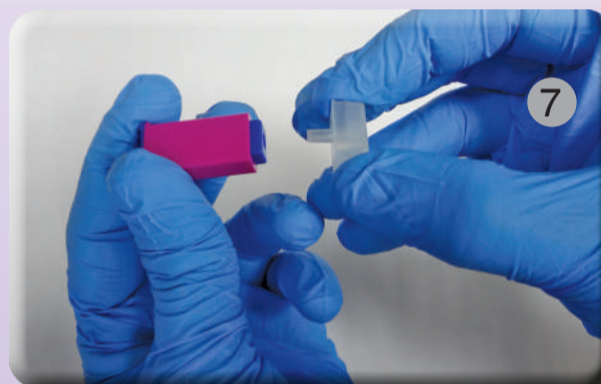
Put on gloves.  
(Use new gloves for each client)



Write a client identifier on the test.



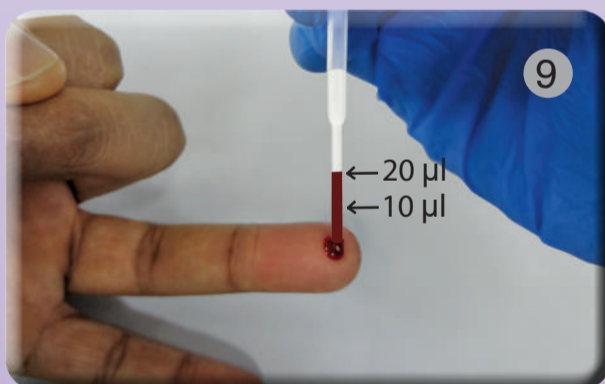
Wipe the client's finger with the alcohol swab. (Alcohol must be dry before pricking).



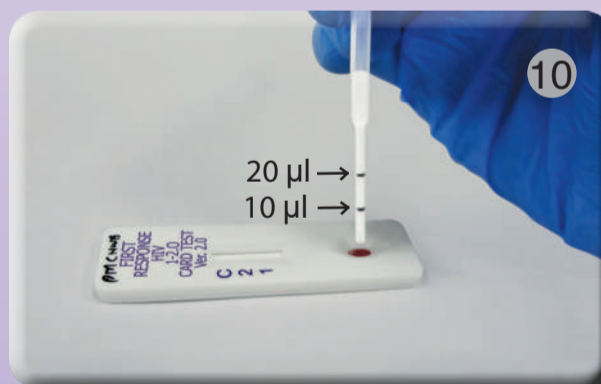
Remove clear protective cap of the lancet.



Squeeze the fingertip then push gently at the lateral side of the fingertip as shown in the above figure. Wipe away the first drop of blood using sterile gauze. Without pressing too hard, gently squeeze fingertip once again to obtain second drop of blood (40-50 µl).



Take the specimen transfer device provided and hold it vertically. Gently squeeze the bulb of the specimen transfer device and immerse the open end in the center of a blood drop and release the bulb slowly to draw the blood up to 20 µl marking line on the specimen transfer device.



Gently squeeze the bulb of the specimen transfer device to add 20 µl of whole blood or 10 µl of serum/plasma to the specimen well by gently touching the tip of the specimen transfer device to the sample pad.



Hold the assay buffer bottle vertically and add one drop of assay buffer to the specimen well. Interpret test results at 15 minutes after adding assay buffer to the specimen well.



Read test results at 15 Minutes.  
Don't interpret after 25 Minutes.

### INTERPRETATION



• The Invalid test results should be retested with new test device.