

FIRST RESPONSE®

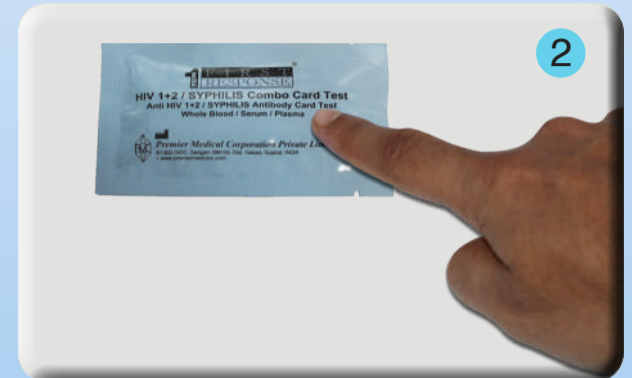
HIV 1+2/SYPHILIS COMBO CARD TEST (Whole Blood/Serum/Plasma)



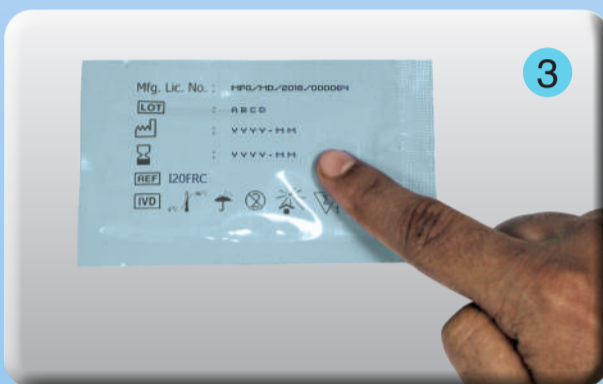
FIRST RESPONSE® HIV 1+2 / Syphilis Combo Card Test kit



Prepare all items shown above for testing. (Timer and gloves are not provided in the test kit).



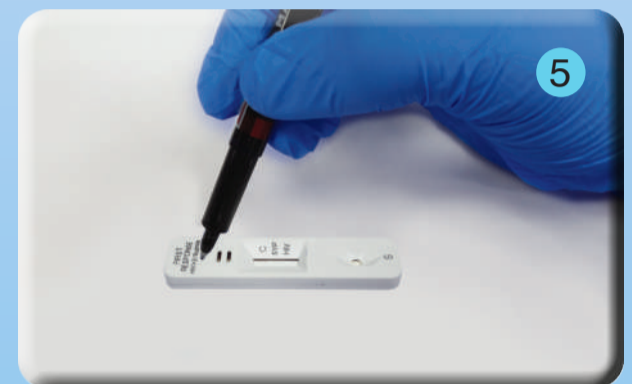
Check the product name and sealing of test device pouch.



Check expiry date on the test pouch.
(If expired, do not use)



Wear gloves.
(Use new gloves for each patient)



Label the test device with the patient identification number.



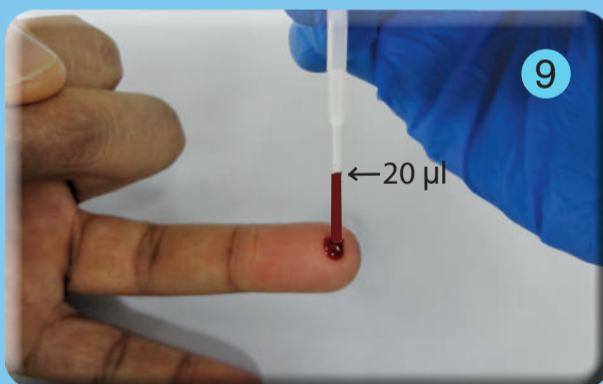
Wipe the complete fingertip with the alcohol swab provided and wait until the fingertip is completely dried.



Side lock confirms integrity of sterile lancet. Verify the seal before detaching the cap. Detach the protective cap of the Sterile Lancet as shown in above figure.



Squeeze the fingertip then push gently at the lateral side of the fingertip as shown in above figure. Wipe the first drop of the blood using sterile gauze. Without pressing too hard, gently squeeze fingertip once again to obtain second drop of blood (~40-50 µl).



Take the specimen transfer device provided and hold it vertically. Gently squeeze the bulb of specimen transfer device and immerse open end in the center of a blood drop and release the bulb slowly to draw up the blood up to 20 µl marking line on the specimen transfer device.



Hold the specimen transfer device vertically as shown in above figure and gently squeeze the bulb of specimen transfer device to dispense 20 µl of whole blood/serum/plasma (Filled up to the marking) to the specimen well (s) by gently touching the tips of the specimen transfer device to the sample pad.

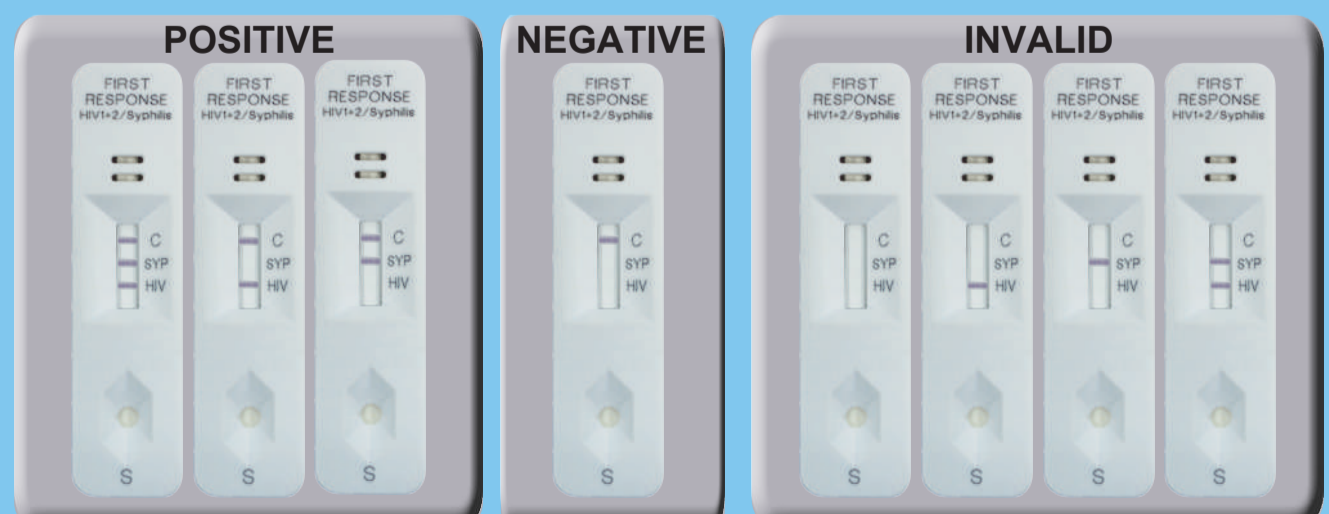


Hold the assay buffer bottle vertically and add two drops of assay buffer to the specimen well. Interpret test results at 15 minutes after adding assay buffer to the specimen well.



Read test results at 15 Minutes.
Don't interpret after 25 Minutes.

INTERPRETATION



• The Invalid test results should be retested with new test device.